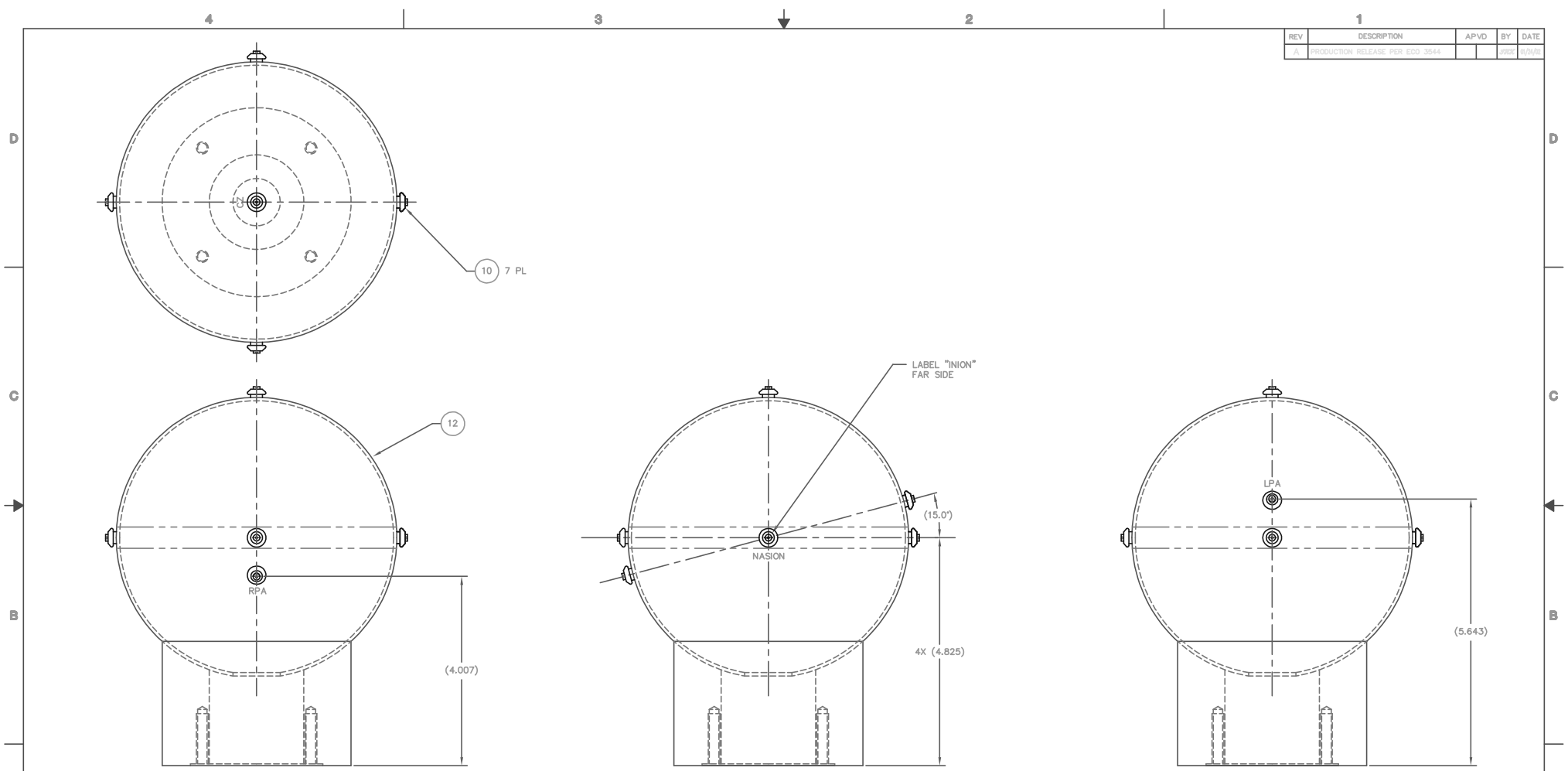


REV	DESCRIPTION	APVD	BY	DATE
A	PRODUCTION RELEASE PER EDO 3544			0928 1998



NOTES: UNLESS OTHERWISE SPECIFIED:

- 1 ALL HOLES DRILLED PERPENDICULAR TO SURFACE.
- 2 ASSEMBLE PER PROCEDURE 8250-122, ITEM 6.
- 3. MOUNT COIL BUTTONS, ITEM 10 (7 PL), USING EPOXY MIXTURE, ITEMS 4, 5, & 11. WIPE OFF ALL EXCESS EPOXY. TAPE BUTTONS IN PLACE AND ALLOW TO CURE OVER NIGHT.
- 4. LABEL AS SHOWN WITH 18 PT. HELVETICA KROY TYPE TAPE.
- 5. COAT KROY TAPE WITH KRYLON CLEAR SPRAYCOAT #1308, ITEM 9.
- 6. MASK BUTTONS AND BOTTOM SURFACE OF BASE BEFORE APPLYING FINISH COAT.
- 7. MARK WITH THE PART/ASSEMBLY NUMBER AND THE REVISION LEVEL BY BAGGING AND/OR TAGGING.

- 8 HEIGHT DIMENSION FOR COUNTERBORE LOCATION IS BASED ON THE OUTER SPHERE SURFACE.
- 9 DIMENSION TAKEN FROM GLOBE ASSEMBLY BASE TO THE BOTTOM LOWER EDGE OF THE COUNTERBORE.

1	EA	-99	ASSEMBLY, GLOBE -- MACHINED	1/2
QTY	UNITS	PART OR IDENTIFYING NUMBER	DESCRIPTION	ITEM NO.
PARTS LIST				
SEE SEPARATE BILL(S) OF MATERIAL				
FORM: NP-DTWT C		REV #	REV	TOLERANCES
		REV #	REV	UNLESS OTHERWISE SPECIFIED
		REV #	REV	DIMENSIONS ARE IN INCHES
		REV #	REV	DECIMALS SURFACES
		REV #	REV	EDGES & CORNERS .003-.010
		REV #	REV	MATERIAL
		REV #	REV	SCALE NONE
		REV #	REV	DO NOT SCALE DIM
NEXT ASSY		USED ON		

4-D NEUROIMAGING

ASSEMBLY, PHANTOM GLOBE, WHOLE HEAD

The information contained on this drawing is the property of 4-D NEUROIMAGING and is not to be used for any other purpose without the express written consent of 4-D NEUROIMAGING.

SHEET 1 OF 2 REV 2 D 9034-167 REV A